

Fill in the missing notes above.

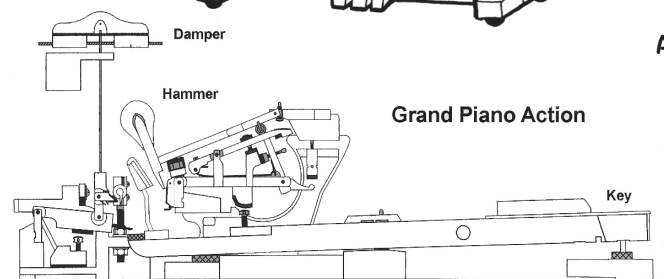
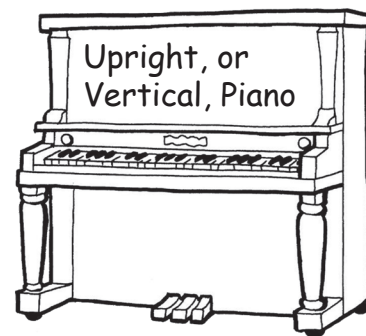
Find fun activities and more about pianos at www.ptg.org/learningcenter.



A piano is one of the most expressive musical instruments you can play. Find the words below hidden across or down in the puzzle. Careful! Some are backwards. Bonus: practice playing each of these musical expressions on your piano.

legato tempo allegro forte
piano mezzo presto staccato

L E G A T O P A
S V B M F N R L
T E M P O A E L
A L T O R I S E
C W I V T P T G
C O Z Z E M O R
S T A C C A T O



Piano History

- Bartolomeo Cristofori is thought to have built the first piano in 1709.
- Cristofori's piano had only 54 keys.
- This new keyboard instrument was unique because it could play loud and soft. Cristofori called it a "gravicembalo col piano e forte", meaning a harpsichord with loud and soft.

A tuning fork is a piece of metal with a handle and two tines. The note you hear when you hit it with something (like a rubber mallet) is always the same (usually A or C), so piano technicians can use a tuning fork to hear if the notes on your piano are the right pitch.



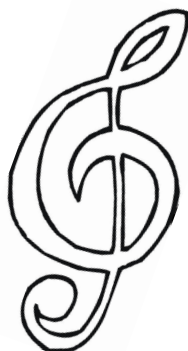
Puzzle Answers
A piano has 88 keys. 52 are white and 36 are black. Unscramble the piano parts...
key, pedal, string, hammer, frame, dampers

A piano has 88 keys.
How many are white?
How many are black?



Make Your Piano Happy!

Keep it in tune. Keep it clean. Keep it in a place where the temperature and humidity stay the same most of the time. Play it regularly. Keep all drinks and liquids away.



Unscramble the piano parts...(hint, hint!)

- eky _____ (press here)
- aepdl _____ (soften, sustain)
- gnstir _____ (good vibrations)
- mharne _____ (no nails needed)
- mefar _____ (heavy, man)
- pesrmd _____ (stifle yourself)